



Vienna University of Technology



A Runtime Model for fUML

MRT 2012 – 7th International Workshop on Models@run.time

www.modelexecution.org



Tanja Mayerhofer, Philip Langer, Gerti Kappel

Business Informatics Group

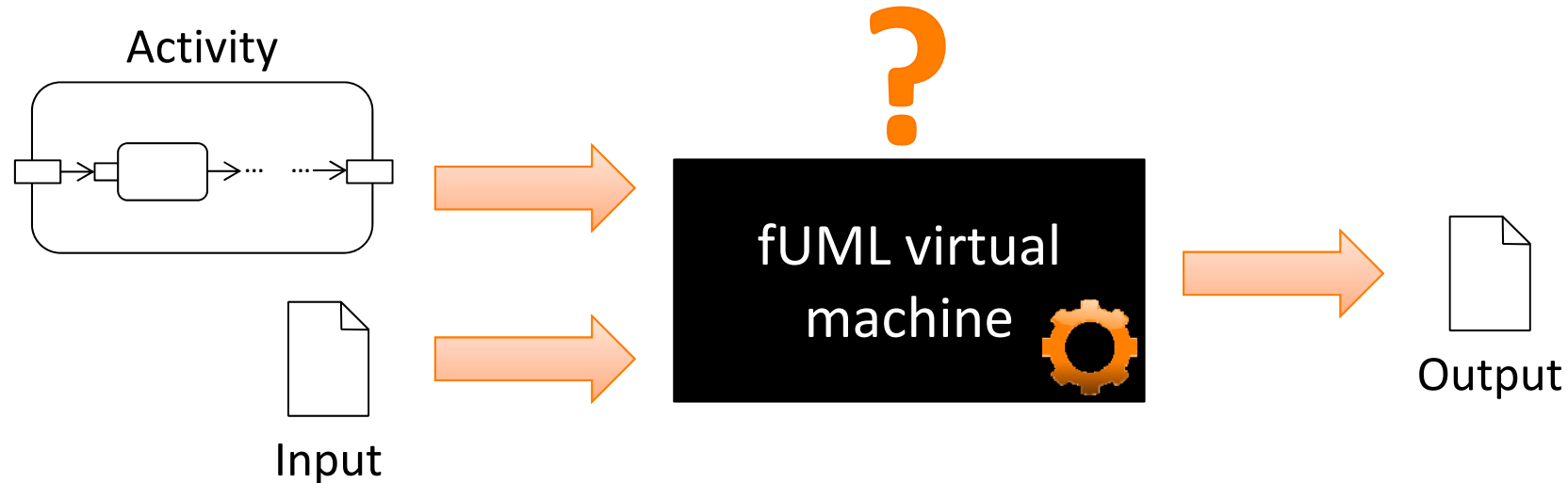
Institute of Software Technology and Interactive Systems
Vienna University of Technology

Favoritenstraße 9-11/188-3, 1040 Vienna, Austria
phone: +43 (1) 58801-18804 (secretary), fax: +43 (1) 58801-18896
office@big.tuwien.ac.at, www.big.tuwien.ac.at

Foundational UML (fUML)

- OMG standard V1.0 released 02/2011
- Specification of dynamic semantics for UML class diagram and activity diagram
- Operational semantics approach specifying a UML virtual machine
- UML evolves to implementation language

Problem Description



- ? Which activity nodes have been executed?
- ? In which order have the nodes been executed?
- ? Which values have been consumed as input / produced as output by a node?
- ? What other activities have been called?
- ? What has the input / output of a called activity been?

Contributions

fUML virtual machine lacks in providing means for

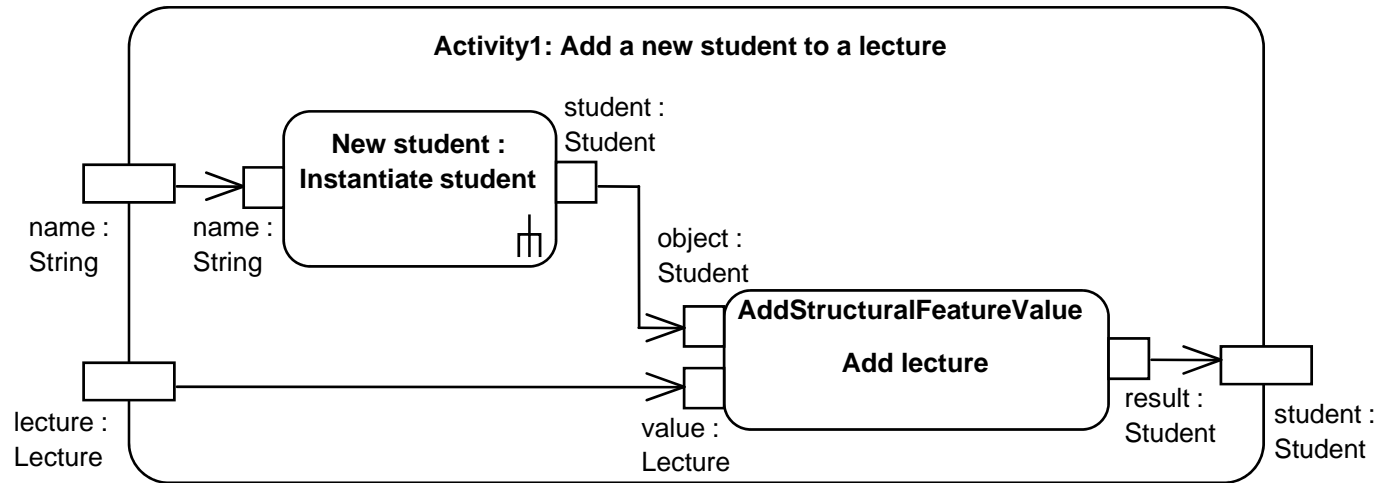
1. **analyzing** the execution → **Trace model**
2. **observing** the execution state → **Event model**
3. **controlling** the execution → **Command API**

Contributions

fUML virtual machine lacks in providing means for

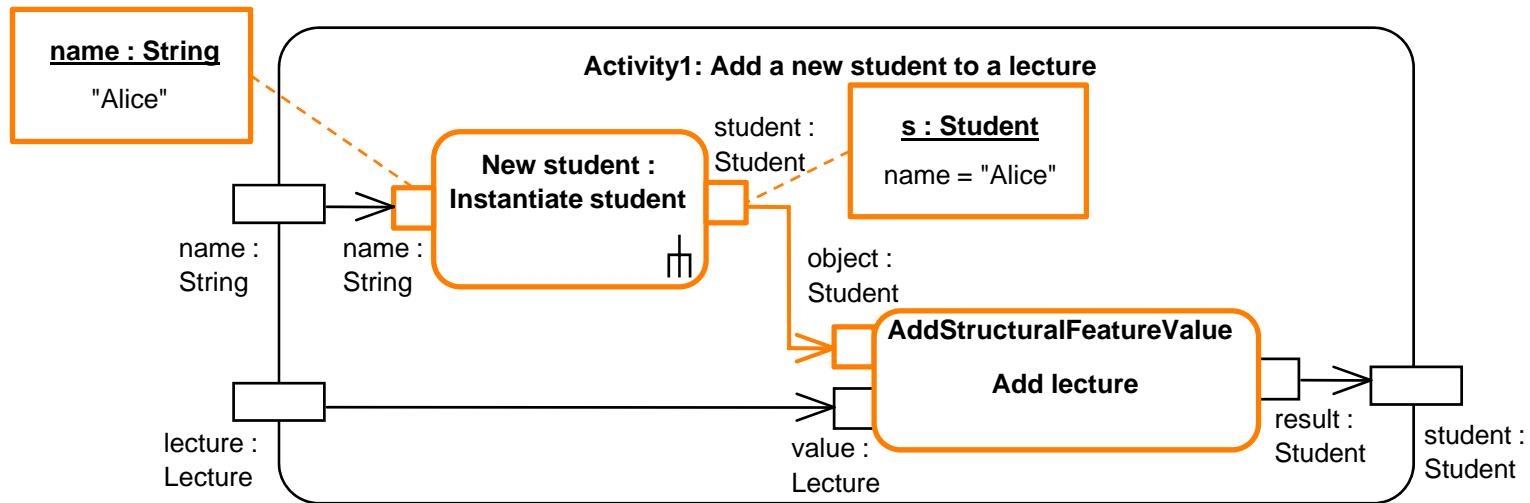
1. **analyzing** the execution → **Trace model**
 - **Chronological execution order**
 - **Input / output relationships**
 - **Token flows**
 - **Call hierarchies**
2. **observing** the execution state → **Event model**
3. **controlling** the execution → **Command API**

Trace Model



Trace Model

Input / Output Relationship



Contributions

fUML virtual machine lacks in providing means for

1. **analyzing** the execution → **Trace model**
2. **observing** the execution state → **Event model**
 - **Start / end of activity execution**
 - **Start / end of activity node execution**
 - **Suspension of activity execution**
 - **Modification of extensional values**
3. **controlling** the execution → **Command API**

Contributions

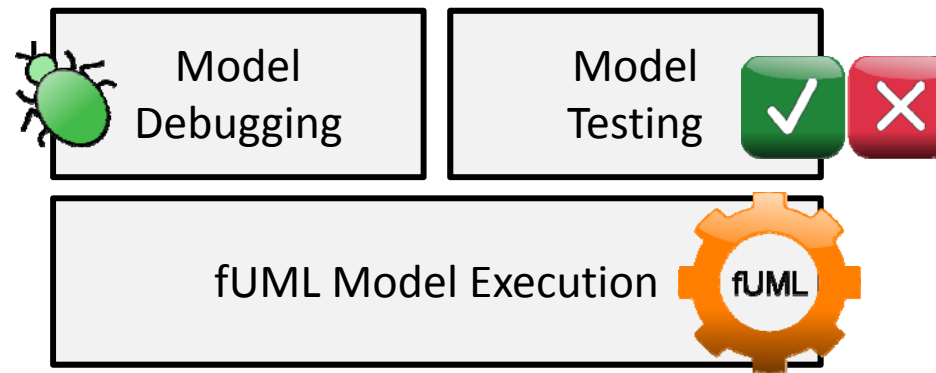
fUML virtual machine lacks in providing means for

1. **analyzing** the execution → **Trace model**
2. **observing** the execution state → **Event model**
3. **controlling** the execution → **Command API**
 - **Start / stop execution**
 - **Resume execution until certain activity node**
 - **Resume execution stepwise**
 - **Retrieve runtime information**

Future Work

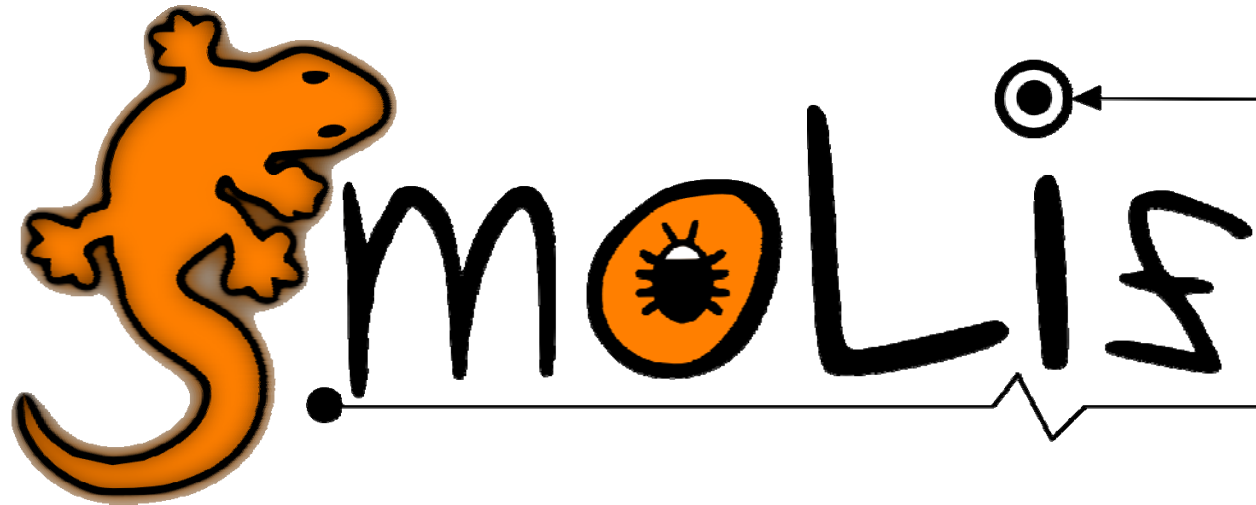
Objective: Model execution environment based on fUML, enabling efficient testing and debugging of models

- Impact analysis of changes
- Trace-based debugging
- DSL for specifying assertions on traces
- Automatic derivation of test cases



- Execution support for fUML → Execution support for DSML*
 - Specification of operational semantics using fUML
 - Automatic derivation of execution support

Thank you!



Debugging and Testing Models Based on fUML

www.modelexecution.org